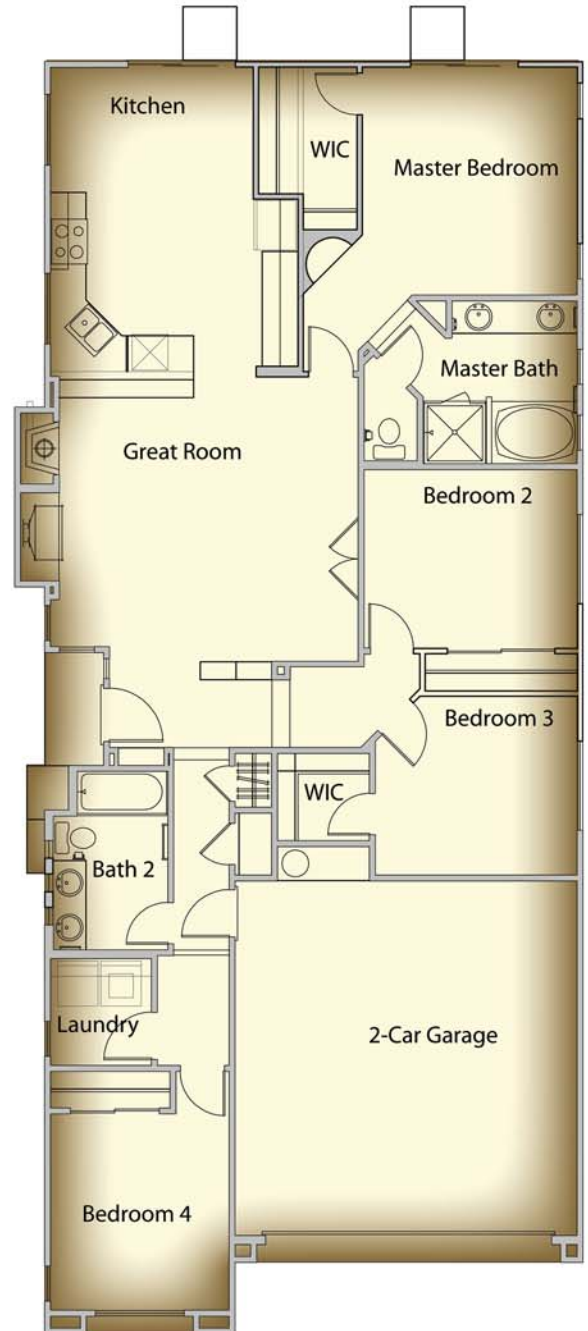


# 1611 Residence



- *Single Story*
- *1,611 Square Feet*
- *4 Bedrooms*
- *2 Bathrooms*
- *2-Car Garage*
- *Great Room*
- *Private Rear Yard*



Subject to change without notice. In a continuous effort by Rhodes Homes to better the quality of your home, we reserve the right to change features, prices, plans and specifications without notice. Floorplans and elevation renderings are artists' renditions. Significant changes may be made during or after the construction of the model homes. Rhodes Homes reserves the right to modify, relocate or eliminate any or all of the features, specifications, plan utilities, design or shape thereof, all without notice or obligation to any purchaser. Location premiums will be charged for certain locations and is not included in the base price of the home. All square footages are approximate square footages of the total livable space. Please see your sales associate for additional information on any changes made. Information valid as of 8/5/2007

